

18.05.

Sponsored by



PRO, PRO2 & STREET DRIFT GRAND OPENING

S/K BIKERNIEKI



DRIFTLATVIA.COM



BIĻĒTES WWW.BILESUSERVISS.LV



DRIFTA KOMISIJA



This driver information booklet document contains all information you, as a driver, and your team should need to know about this event.

- ☆ LATVIA DRIFT CHAMPIONSHIP PRO2 CLASS 1st STAGE
- ☆ LATVIA DRIFT CHAMPIONSHIP STREET CLASS 1st STAGE
- ☆ LIVONIA/LATVIA/ESTONIA DRIFT CHAMPIONSHIP 2nd STAGE
- ☆ BALTIC DRIFT CHAMPIONSHIP PRO2 CLASS 2nd STAGE
- ☆ LITHUANIA DRIFT CHAMPIONSHIP PRO CLASS 1st STAGE

ALL CHAMPIONSHIPS AND CUPS ARE OPEN TO DRIVERS FROM ANY COUNTRY!

Dear drivers, we would like to invite you all to the opening of the Latvian drift season 2025.

We can expect two exciting days full of drifting with Street, PRO2 and PRO classes. Two tracks at the same time, in the central part of the Biķernieki track. We will be happy to welcome each of you in Biķernieki, see you in the race track!

RIGA, MAY 17-18.

Latvia DRIFT

GRAND OPENING

DRIVER REGISTRATION IS OPEN

BIĶERNIEKU TRASE RĪGA

Register on our website:
www.driftlatvia.com

Should you have a question about anything either contained in this document or feel there is something not included in this booklet that should be and that you have a question about, please contact, Elīne Berķe Bluša by email at eline@driftlatvia.com

DRIVER INFORMATION V1

LATVIA DRIFT GRAND OPENING | EVENT 1 | LATVIA | BIKERNIEKI SPORT COMPLEX

SCHEDULE

SCHEDULE V2 16.-18.05.2025

THE ORGANIZER INFORMS THAT THIS IS A PROVISIONAL TIMETABLE FOR THE EVENT

FRIDAY 16.05.2025 ALL CLASES

17:00-20:00 OPEN PADDOCK, ADMINISTRATIVE CHECK AND TECHNICAL SCRUTINEERING FOR THOSE WHO WANT, WE SUGGEST TO USE THIS TIME
21:00 PADDOCK CLOSES

SATURDAY 17.05.2025 PRO2 AND PRO – MAIN TRACK

08:00-12:00 ADMINISTRATIVE CHECK (DRIVERS WITHOUT IT WILL NOT BE ALLOWED PARTICIPATE IN PRACTICE)
09:00-12:30 TECHNICAL SCRUTINEERING (DRIVERS WITHOUT IT WILL NOT BE ALLOWED PARTICIPATE IN PRACTICE)
08:30 PRO2 BREFING
09:30-12:10 PRO2 PRACTICE
11:00 PRO BRIEFING
12:40-14:10 PRO PRACTICE PART 1
13:15 PRO2 BRIEFING – QUALIFICATION
14:30-16:30 PRO2 QUALIFICATION
17:00-18:00 PRO PRACTICE PART 2
17:00 PRO2 BRIEFING QUALIFICATION
18:10-20:00 PRO QUALIFICATION
20:10 PRO BRIEFING – TANDEMMS

SUNDAY 18.05.2025 PRO2 UN PRO – MAIN TRACK

09:00-10:00 PRO2 PRACTICE TOP32
10:15-12:00 PRO2 TANDEMMS TOP32
12:15-13:30 PRO PRACTICE TOP32
14:00 RACE OPENING CEREMONY- for every driver, without burnouts!
14:40-16:30 PRO2 TANDEMMS TOP16
16:50-19:30 PRO TANDEMMS TOP32
19:30 PRIZE GIVING CEREMONY
19:40 DRIVERS AFTER-RACE BRIEFING (NOT MANDATORY)

SATURDAY 17.05.2025 STREET – BEHIND START HOUSE

08:00 - 11:00 ADMINISTRATIVE CHECK (DRIVERS WITHOUT IT WILL NOT BE ALLOWED PARTICIPATE IN PRACTICE)
08:30 - 12:00 TECHNICAL SCRUTINEERING (DRIVERS WITHOUT IT WILL NOT BE ALLOWED PARTICIPATE IN PRACTICE)

10:00-12:00	PRACTICE PART 1
12:10	BRIEFING ABOUT QUALIFICATION
13:30-16:00	PRACTICE PART 2
16:10-19:00	QUALIFICATION STREET
19:20	TANDEMS BRIEFING

SUNDAY 19.05.2025 STREET – BEHIND START HOUSE

10:00-11:00	STREET X PRACTICE
11:10-13:30	STREET X TANDEMS
14:00	RACE OPENING CEREMONY
15:00-16:00	STREET TOP32 PRACTICE
16:20-19:30	STREET TOP32 TANDEMS
19:30	PRIZE GIVING CEREMONY
19:40	DRIVERS AFTER-RACE BRIEFING (NOT MANDATORY)

THE ORGANIZER KEEPS RIGHTS TO MODIFY THE TIMETABLE OF THE EVENT IF NEEDED

Please note that the agenda may be changed depending on the number of registered participants. By monitoring the registration process, the organizer monitors whether the track time is appropriate for the number of participants. If the agenda is changed, the organizer will inform all registered drivers about it no later than 09.05.2025

Additionally, the organizer informs if the agenda suddenly changes drastically, including the fact that an additional day may be added- practice in Friday, the organizer will inform the drivers about this no later than 1.5 weeks in advance.

TRACK



BIKERNIEKI RACE TRACK

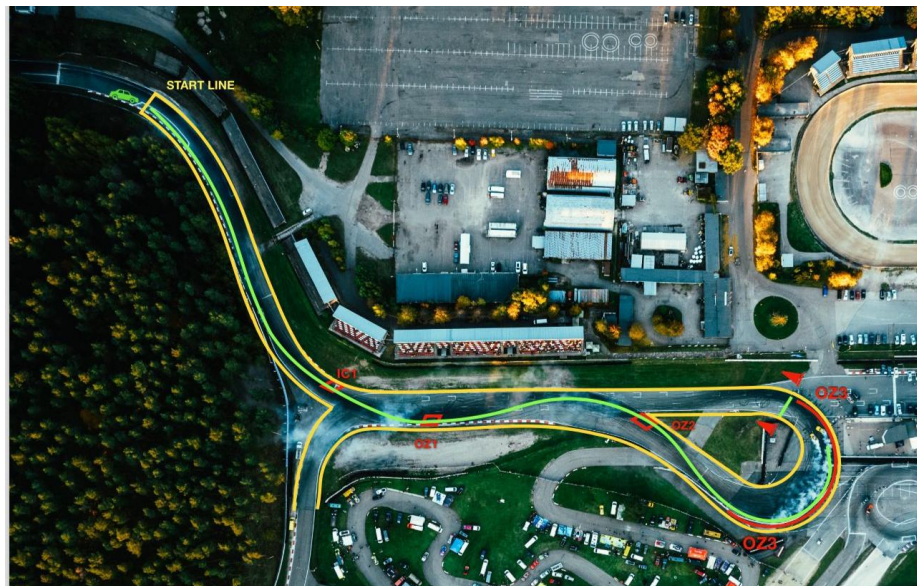
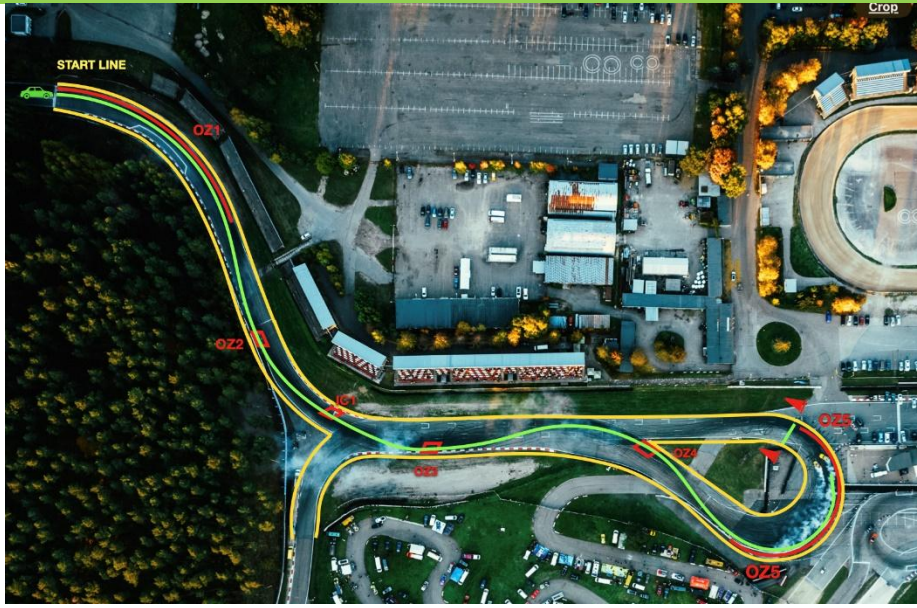
Track contact information: www.bksb.lv

Bikernieki race track address:

Rīga, Sergeja Eizenšteina iela 2, LV – 1079

GPS coordinates: 56.9665° N, 24.2326°

LAYOUT PRO2/PRO

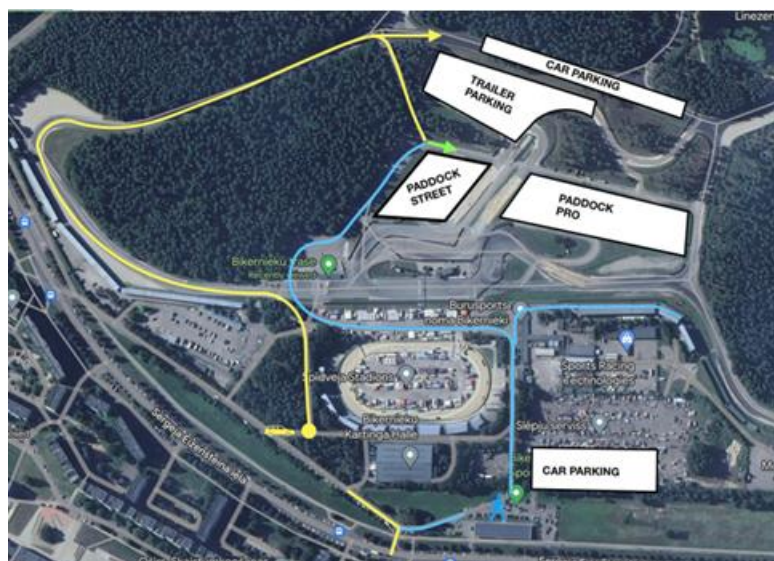


THE COMPETITION WILL TAKE PLACE IN THE MAIN PART OF THE TRACK! CONFIGURATION #FDSTYLE

LAYOUT STREET



STREET TRACK PLACE- "BEHIND THE START HOUSE" THE TRACK CONFIGURATION WILL BE DEVELOPED SPECIFICALLY FOR THIS STAGE AND WILL BE ANNOUNCED BEFORE THE STAGE EVENT MAP



OFFICIALS

- 📄 Race Director: Jānis Blušs
- 📄 Steward: Elīne Berķe Bluša
- 📄 Clerk of the course: Gunārs Ķeipāns
- 📄 Secretary of the Competition: Laila Ķeipāne
- 📄 Chief scrutineer: Dainis Akmentiņš
- 📄 Safety officer: Gatis Bajinskis
- 📄 Judges: STREET- Ingus Jēkabsons, Zigmārs Eigims, Nauris Balodis
- 📄 Judges: PRO2/PRO- Imants Bitmets, Tarmo Livimagi, Timas Simniska

REGISTRATION FOR RACE

REGISTRATION ONLINE FOR DRIVERS IS OPEN UNTIL 10.05.2025 PLEASE CHECK ENTRY FEE CHANGES BY REGISTRATION DEADLINE:

<https://forms.gle/U21QcwyC5G1x7hgo7>

Supplementary regulations and all documents you can find in link- in BUT we suggest to use SPORTITY:

<http://www.driflatvia.com/dalibniekiem/dokumenti/>

**ENTRY FEE: 150 EUR (standart one, please check deadlines)
20 EUR extra Baltic Pro2**

Entry fee can be paid to the race office during administrative checks or if you need invoice for company please mention that in registration form and you will receive invoice before race from organizer.

**One driver can only participate in one race class, unless based on the annual regulations of the Latvian Drift Championship, the driver has a race car for each test class! An driver cannot participate in two classes with one car!*

FOR MEDIA

REGISTRATION FOR MEDIA ARE OPEN UNTIL 10.05.2025

<https://www.driflatvia.com/medijiem/mediaaccreditation/>

Location of Media center: BIĶERNIEKI RACETRACK- START HOUSE 2ND FLOOR

Media center opening hours: Every day from 09:00-21:00

Please read the media accreditation and safety rules: <http://www.driflatvia.com/medijiem/>



TRAVEL

If an driver plans to come to the competition by ship, then we would like to mention that Drift has special discounts on Tallink ships, and they should definitely be used, as they start from 40% and up. If you need information, please contact us.



HOTELS INFORMATION

WWW.BOOKING.COM

CLOSEST HOTELS TO THE TRACK:

- TOMO HOTEL THE CLOSEST ONE
- RIJA VEF HOTEL SECOND CLOSEST HOTEL TO TRACK

WE HAVE ALSO 4 HOTEL PARTNERS, 2 OF THEM ARE ALSO CLOSEST HOTELS TO THE TRACK, FULL INFO AND THEIR OFFER YOU CAN FIND: <https://www.driftlatvia.com/dalibniekiem/>

DRIVERS ALSO HAVE THE OPPORTUNITY TO STAY OVERNIGHT AT THE TRACK

If drivers stay overnight on the track, certain rules must be followed:

1. if the driver stays in the trailer, the trailer must be "tucked in" in the participant's parking area, so that he is not visually visible much and that there is no mess around during the competition time.
2. the best recommendation is to park camper in the camper parking lot, which is before the trailer parking lot.
3. if the teams spend the night in tents, then the tents must also be visually "hidden" in the participant's paddock area, so as not to create an unsportsmanlike view of the drivers boxes and the park as a whole.

The organizer has every right to ask you to drive the trailer or remove the tents at any time.

4. There will be available showers from Saturday morning until Sunday evening.

PRO- GET THE WILD CARD

Latvia drift offers an unprecedented opportunity, the winner of the Riga stage of the opening drift season will receive a Wild card to the Riga stage of the Drift Masters.



STICKER SCHEME

Latvia DRIFT UZLĪMJU SHĒMA STICKER SCHEME

LATVIJAS DRIFTA SEZONA 2025 / LATVIA DRIFT SEASON 2025

- 1 FRONT WINDOW STICKER
- 2 NUMBER PLATE
- 3 DRIVER NUMBER STICKERS WITH NAME SURNAME
- 4 SHELL HELIX
- 5 DJI
- 6 POCO
- 7 CULT



PADDOCK**PADDOCK OPENING TIMES:**

- 📅 **FRIDAY 16:00-22:00**
- 📅 **SATURDAY 07:00-22:00**
- 📅 **SUNDAY 07:30-22:00**
- 📅 **Entry to the race track- MAIN ENTRANCE! Friday- Saturday**
- 📅 **Entry to the race track- GATE NR.6 IN MAP- Sunday**

WHEN YOU ARRIVE AT THE TRACK:

- 📅 PLEASE **USE THE MAIN ENTRANCE GATE ON FRIDAY AND SATURDAY**
- 📅 ADMISSION TICKETS CAN ONLY BE PICKED UP BY THE DRIVER IN THE ENTRANCE BY DRIVER LIST!
- 📅 EACH DRIVER FROM PRO AND PRO2 CLASS WILL RECEIVE 4 TICKETS (DRIVER, 2 MECHANICS, SPOTTER) AND ONE **TECHNICAL TRANSPORT** CAR PASS
- 📅 EACH DRIVER FROM STREET CLASS WILL RECEIVE 3 TICKETS (DRIVER, 1 MECHANIC, SPOTTER) AND ONE **TECHNICAL TRANSPORT** CAR PASS
- 📅 THE DRIVER CAN PURCHASE EXTRA TICKETS IF NECESSARY, TICKET PRICE 15 EUR (MAX 3 TICKETS), IF SOMEONE HAVE BIGGER TEAM, PLEASE INFORM ABOUT THAT ORGANIZER NOT LATER THEN 2 DAYS BEFORE THE RACE
- 📅 THE DRIVER CAN LEAVE HIS CAR OVERNIGHT IN THE PARTICIPANT'S PARK- PADDOCK! BUT PLEASE DO NOT LEAVE EXPENSIVE-IMPORTANT ITEMS IN THE PIT AREA, PUT INTO TECHNICAL CAR.
- 📅 THE BIKERNIEKI TRACK HAS THEIR OWN RULES REGARDING THE USE OF ELECTRICITY WHICH ALSO APPLIES TO THE DRIVERS, PLEASE READ THE RACE REGLAMENT FOR THIS SECTION IF YOU NEED ELECTRICITY
 - *The organizer informs that it is categorically forbidden to light a grill, etc., in the pits or anywhere else on the track during the competition. It is allowed only after the end of the competition, observing all basic safety rules. The organizer informs that security can also stop technical cars on an optional basis to check whether alcohol is being brought into the track area.*
- 📅 The Main Paddock is for all classes together, if drivers are in one team from different classes, they can stand together without problems. There is no more then 1 technical car inside the paddock, please respect that, and we will check this also.

TECHNICAL COMMISSION INFORMATION

There will be technical inspection at Round, so please remember to check and comply with all rules & regulations, and take care to note both- the noise regulations and the maximum tire size. Technical inspection will be available every day, in timing based on *schedule*, BUT WE REALLY SUGGEST TO USE CHANCE TO DO ALL IN FRIDAY AND SAVE YOUR TIME, ATLEAST THOSE WHO LIVE CLOSE TO RIGA. without a sticker of the technical commission, the permission for training will be denied!

If you need to contact the technical commissioner during the competition, please call him: +37129560050 Dainis

TIRE SIZES

- 📅 **STREET MAX 205 STREET TIRE**
- 📅 **PRO2 MAX 225 STREET TIRE (Latvia Pro2 and Baltic Pro2)**
- 📅 **PRO MAX 265**

PRO2 TIRE RULE - MAX 225- STREET TIRES

Maximum tread width of the rear tyres is 225 mm
Front tyres are free
Only the street legal rear tyres is allowed.
It is not allowed to use semi-slick and full slick tyres
Eligibility of the tyres is checked during the competition at the line-up area.
If there is any doubt about the suitability of the tire, send a clarifying question to dableds@gmail.com Technical control can also send the competitor back from the starting line, in case the competitor makes a mistake with the tire rule.
In the season 2025 it is prohibited to use semi-slick or full slick tyres. If you have doubts about tyres you intend to use, please send the questions to dableds@gmail.com to avoid unnecessary problems at the scrutineering. If the driver violating the tyre regulations, scrutineers can eliminate the driver even from line-up.

NOISE

Exhaust system - exhaust system starting from the cylinder head is not regulated, as long as the 103 dB(A) at 4500 RPM noise level (+3dB(A) possible error), measured in accordance with FIA noise measurement method, is not exceeded..."

No car is permitted to be drifted between the hours of 9:00pm (21:00) to 9:00am. Please also remember that it is also forbidden to take your competition vehicle onto the any track areas- layout, and take a ride without informing race organizer and official marshals into the track area.

Music on the paddock must quiet at 10:00pm (22:00).

THERE ARE QUIET HOURS FROM 23:00 PM-08:00 AM

AND PLEASE UNDERSTAND IF YOU FIX YOUR CAR IN PERIOD MENTION UP, ITS PROHIBITED TO TEST IT, MAKE TESTS, MAKE SOUND, PENALTY 500 EUR, all around track are cameras, so please don't do anything without permission! We will be strict this year about this!

TIRE CHANGING

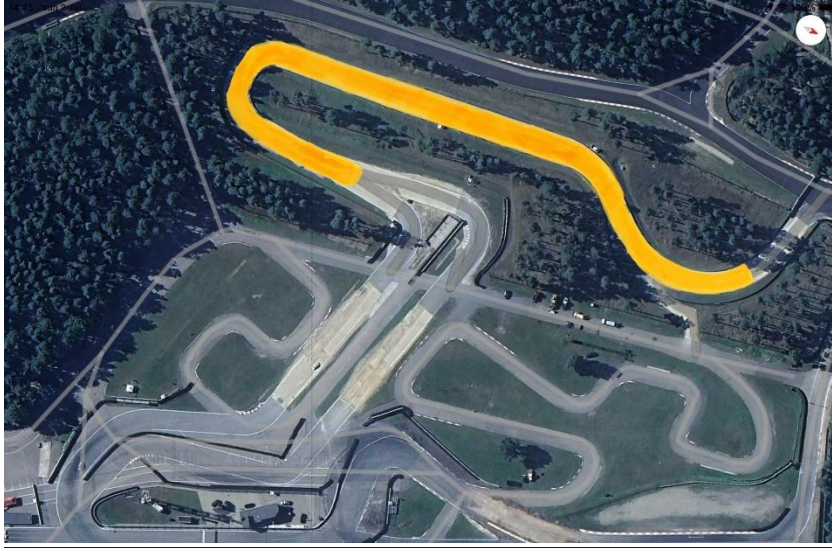
There will be tire-changing crew, which will work at the place. Tire fitting is included in the entry fee! The tire assembly will be located in the paddock.

Tire changing will work as in Saturday as in Sunday!

Please do not leave your tires at the tire fitting, hoping that the fitters will do the feeding and inspection of the tires for you! if there is no person with the tires, but someone gives the tires, of course they will take what someone give! People who do their job cannot control your tires, etc. at the same time. If you leave the tires at the assembly, your person must be there; otherwise, the tire assembly people will ignore the tires.

TRAILER PARKING

Trailer parking- **RALLYCROSS TRACK GRAVEL PART!** It is strictly forbidden to park trailers in any other place! We respect each other!



ELECTRICITY

Drivers, who need an electricity connection, must inform the organizer and pay extra for that. In the Biķernieki track has a fixed payment for electricity connections, which also applies to the drivers. It is categorically forbidden to connect without permission to any electricity around the track, the Bikernieki personal is checking connections all the time and seeing in computer used connections. Penalty for connecting without permission 100 EUR for every case.

The rates indicated below are set for 1 connection for 1 day, in connection with the BKSB official price sheet, which is also available on the website www.bksb.lv. Drivers can make the payment to the secretary of the competition, indicating the location of the boxing place, the drivers starting number and type of electrical connection.

- Electricity connection (power of connected electrical appliances up to 3kW) – 20 EUR (Incl. VAT 21%)
- Electricity connection (power of connected electrical appliances from 3 to 12 kW) – 35 EUR (Incl. VAT 21%)
- Electricity connection (power of connected electrical appliances from 12kW) - 70 EUR (Incl. VAT 21%)

DRIVER BRIEFING AREA

Drivers 'meetings will take place in a separate room - the drivers' meeting room-area. The room will be located in the start of both participants' parks.

Spotters' areas will be confirmed for you during the first briefing.

In driver meetings will participate just drive+ spotter, if he is registered in registration process, so we can check the persons who attending there, thank you!

ADDITIONAL REGULATION

1. During the event, it is not allowed for drivers to drift outside the track on the track territory, any time! In the regulations this point is added and have even the possibility of being disqualified, and it's not a joke!
2. During the event, it is **strictly forbidden** to drift on the way to the starting zone or after the finish. The first offense will be fined with up to 100 EUR.
3. **Doing a standing burnout is strictly forbidden any time- any place.**
4. Drivers are not allowed to drift outside their runs.
5. During the event, each driver is fully responsible for their actions on the track and for the safety of themselves and others.
6. During the event, on the track territory leading from the service park to the start zone, a driver takes full responsibility of any accidents with people, who might be on the track. It is suggested to drive no faster than 10 km/h from the service park to the start zone. If driver is caught with faster speed or drifting from the service park to the start zone, drift organizer can put penalty - 100 eur. There is speed limit also in forest , around circle to main track, please drive in controlled speed- max 50 km/h, so you can react in different situations.
7. The service park will be located in the track territory, where only the race car and service car are allowed to enter, in technical car sticker it's mandatory to write in phone number and driver surname!
8. The maximum allowed speed in the service park is 10 km/h. For the first time, speeding can be punished with a warning or a fine, but if any driver or drivers representative violates this rule with the race and/or service car repeatedly, they will not be allowed to enter the service park anymore.
9. PRO CLASS AND PRO2, FROM TOP16 DRIVERS WILL HAVE TO MAKE THE HOT PIT IN THE START LINE, SO PLEASE PREPARE READY YOU TECHNICAL CAR FOR THAT, IF RACE DIRECTOR DON'T INFORM DIFFERENT IN RACE DAY!!

PLEASE JOIN THE SPORTITY APP



Sportity

For direct event information please download the Sportity app and insert this password:

rigababy

Sportity app is available in



www.sportity.com



IMPORTANT INFORMATION THAT CAN HELP YOU

CLOSEST CAR PART SHOPS:

- ☆ Adress: Dzelzavas iela 120 J, Rīga (1KM) www.apemotors.lv +37167387878
- ☆ Our use Intercars web page

GASOLINE:

- ☆ E85 you can get VIADA, Gunāra Astras street 4,2KM
- ☆ CIRCLE K 1,5km
- ☆ NESTE 1,5km

CAR WASH

- ☆ FORAUTO- Biķernieku iela 118, 2km
- ☆ Carwash service 1km

CLOSEST SHOPS:

- ☆ Food- RIMI, 280m from track
- ☆ Food and medicine- SKY- 1,7km from track
- ☆ Lidl 300m from track
- ☆ Shopping mall Alfa Park- Brīvības gatve 372, 2,8km

It is strictly forbidden to bring glass bottles and heavy alcohol into the paddock and race area, also forbidden to drink heavy alcohol in race time in you paddock area!

CLOSEST HOSPITAL:

- ☆ Rīgas Austrumu klīniskā universitātes slimnīca, Hipokrāta iela 2, Vidzemes priekšpilsēta, Rīga, LV-1038

RULES OF THE ROAD

- ☆ Maximum permitted speed: 50 km / h in cities, 90 km / h outside cities;
- ☆ In road traffic, photo radars are used to control speed;
- ☆ Safety belts must be worn by the driver and passengers at all times;
- ☆ While driving, it is forbidden for the driver to use the cell phone while driving;
- ☆ The traffic police may require drivers to undergo an alcohol test;
- ☆ The maximum level of alcohol in the blood is 0.05%, for drivers with less than two years of experience 0.02%.

Please also remember that if trucks who have bigger weight than 3000kg or the composition is bigger weight than 3500 kg need to buy „Vinjete”, you can buy separate it for 1 day, 1 month our 1 year!

There are different ways how you can buy „Vinjete” also by SMS:

<https://www.lv vignette.eu/>

https://smsvinjetes.lv/?gclid=EAlaIqObChMljlurZLOC4wIVwpQYCh2SAw90EAAAYASAAEgIN3PD_BwE

<http://www.viglat.lv/en>