

WELCOME TO RIGA, LATVIA, 04.-06.10.2024

Sponsored by



# 06.<sup>10</sup>

## LV BET DRIFT GRAND SCORES FINAL



**BALTIC FINALS IN SEMI PRO & PRO**



BIĻĒTES VISĀS BIĻEŠU SERVISĀ KASĒS UN [WWW.BILESUSERVISS.LV](http://WWW.BILESUSERVISS.LV) [DRIFTLATVIA.COM](http://DRIFTLATVIA.COM)

## DRIVER INFORMATION- UPDATED

FINAL FIGHT- GRAND FINAL 2024 | EVENT 7 | LATVIA | BIKERNIEKI SPORT COMPLEX

This driver information booklet document contains all information you, as a driver, and your team should need to know about this event, including

- ☆ LATVIA DRIFT CHAMPIONSHIP SEMI PRO CLASS 6<sup>th</sup> STAGE
- ☆ LATVIA DRIFT CUP STREET CLASS 6<sup>th</sup> STAGE
- ☆ LIVONIA DRIFT CHAMPIONSHIP 6<sup>th</sup> STAGE
- ☆ BALTIC DRIFT CHAMPIONSHIP SEMI PRO CLASS 4<sup>th</sup> STAGE
- ☆ LITHUANIA DRIFT CHAMPIONSHIP SEMI PRO CLASS
- ☆ NEZ DRIFT CHAMPIONSHIP 2<sup>nd</sup> STAGE
- ☆ BALTIC DRIFT CHAMPIONSHIP PRO CLASS 6<sup>th</sup> STAGE

**ALL CHAMPIONSHIPS AND CUPS ARE OPEN TO DRIVERS FROM ANY COUNTRY!**



DRIFTA KOMISIJA



WELCOME TO RIGA, LATVIA, 04.-06.10.2024

Dear drivers, we would like to invite you all to the GRAND FINAL IN BALTIC 2024

We can expect two exciting days full of drifting with Street, Semi Pro and Pro classes. Two tracks at the same time, in the central part of the Biķernieki track. We will be happy to welcome each of you in Biķernieki, see you in race track!

Should you have a question about anything either contained in this document or feel there is something not included in this booklet that should be and that you have a question about, please contact, Elīne Berķe Bluša by email at [eline@driftlatvia.com](mailto:eline@driftlatvia.com)

Please note that this document is for informational purposes only. The basic competition document is the competition regulations. Based on the fact that this document is for informational purposes only, and the competition includes stages from several countries, this document is written in English. Thank you for your understanding



DRIFTA KOMISIJA



# SCHEDULE

## SCHEDULE V2 04.-06.10.2024

<b>PRO AND SEMI PRO SCHEDULE 04.-06.10.2024- MAIN BIKERNIEKI TRACK #NEWSTYLE</b>	
<b>FRIDAY 04.10.2024</b>	
12:00-20:00	OPEN PADDOCK AS FOR SEMI PRO AS FOR PRO, ADMINISTRATIVE CHECK AND TECHNICAL SCRUTINEERING FOR THOSE WHO WANT( Semi Pro drivers who wan't to drive in Friday practice need to registrer and make technical scrutinnering before practice)
16:00-20:00	SEMI PRO PRACTICE- 2 GROUPS BY 1 HOUR TIME.
22:00	PADDOCK CLOSES
<b>SATURDAY 05.10.2024</b>	
08:30-12:00	OPEN PADDOCK AS FOR SEMI PRO AS FOR PRO, ADMINISTRATIVE CHECK AND TECHNICAL SCRUTINEERING IF SOMEONE DIDN'T ARRIVE IN FRIDAY
09:30	PRO MANDATORY BRIEFING- QUALIFICATION
10:30-12:30	PRO PRACTICE
12:50-14:20	PRO QUALIFICATION
11:30	SEMI PRO MANDATORY BRIEFING – QUALIFICATION
14:40-16:40	SEMI PRO PRACTICE 2 groups
16:00	PRO TANDEM BRIEFING
17:00-19:30	SEMI PRO QUALIFICATION
19:35	LT SEMI PRO TANDEM BRIEFING
20:00-22:00	LT SEMI PRO TANDEMS
22:10	LT SEMI PRO PRIZE GIVING CEREMONY
23:30	PADDOCK CLOSES
<b>SUNDAY 06.10.2024</b>	
08:40	PRO TANDEM BRIEFING
09:30-10:30	PRO TANDEM PRACTICE
09:40	SEMI PRO TANDEM BRIEFING BALTIC & LV
10:40-11:40	SEMI PRO TANDEM PRACTICE BALTIC & LV
	*maybe opening ceremony, info will follow
12:00-15:00	PRO TANDEMS TOP32
15:10-18:00	SEMI PRO TANDEMS BALTIC & LV
18:10	PRIZE GIVING CEREMONY FOR THE EVENT
21:00	PADDOCK CLOSES

THE ORGANIZER KEEPS RIGHTS TO MODIFY THE TIMETABLE OF THE EVENT IF NEEDED



DRIFTA KOMISIJA



Shell HELIX



**STREET CLASS GRAND FINAL 2024 SPEEDWEY STADIUM****FRIDAY- PIEKTDIENA 04.10.2024**

09:00	OPEN PADDOCK/ ATVĒRTS DALĪBNIEKU PARKS
09:30 - 14:00	ADMINISTRATIVE CHECK/REĢISTRĀCIJA (DRIVERS WITHOUT IT WILL NOT BE ALLOWED PARTICIPATE IN PRACTICE/ SPORTISTIEM PIELAIDE TREIŅIEM TIKAI PĒC REĢISTRĀCIJAS UN TEHNISKĀS KOMISIJAS)
09:30 - 14:00	TECHNICAL SCRUTINEERING (DRIVERS WITHOUT IT WILL NOT BE ALLOWED PARTICIPATE IN PRACTICE)
10:00-13:00	STREET PRACTICE/ STREET TREIŅŠ- 3 groups/ 3 grupas
13:05	STREET BRIEFING QUALIFICATION/ STREET SAPUCE KVALIFIKĀCIJA
13:50-17:50	STREET PRACTICE/STREET TREIŅŠ- 3 groups/ 3 grupas
18:00-21:00	QUALIFICATION STREET/ KVALIFIKĀCIJAS STREET KLAŠE

**SATURDAY- SESTDIENA 05.10.2024**

11:00	DRIVERS BRIEFING STREET X/ BRAUCĒJU SAPULCE STRET X
12:00-13:00	STREET X PRACTICE/ STREET X TREIŅŠ
13:30-16:00	STREET X TANDEMS / STREET X TANDĒMI
16:10	STREET TOP32 BRIEFING/ STREET TOP32 SAPULCE
17:30-18:30	STREET TOP32 PRACTICE/ STREET TOP32 TREIŅŠ
19:00-22:00	STREET TOP32 TANDEMS/ STREET TOP32 TANDĒMI
22:10	PRIZE GIVING CEREMONY FOR THE EVENT/ APBALVOŠANAS CEREMONIJA

**TRACK****BIKERNIEKI RACE TRACK**Track contact information: [www.bksb.lv](http://www.bksb.lv)

Bikernieki race track address:

Rīga, Sergeja Eizenšteina iela 2, LV – 1079

GPS coordinates: 56.9665° N, 24.2326°

DRIFTA  
KOMISIJA

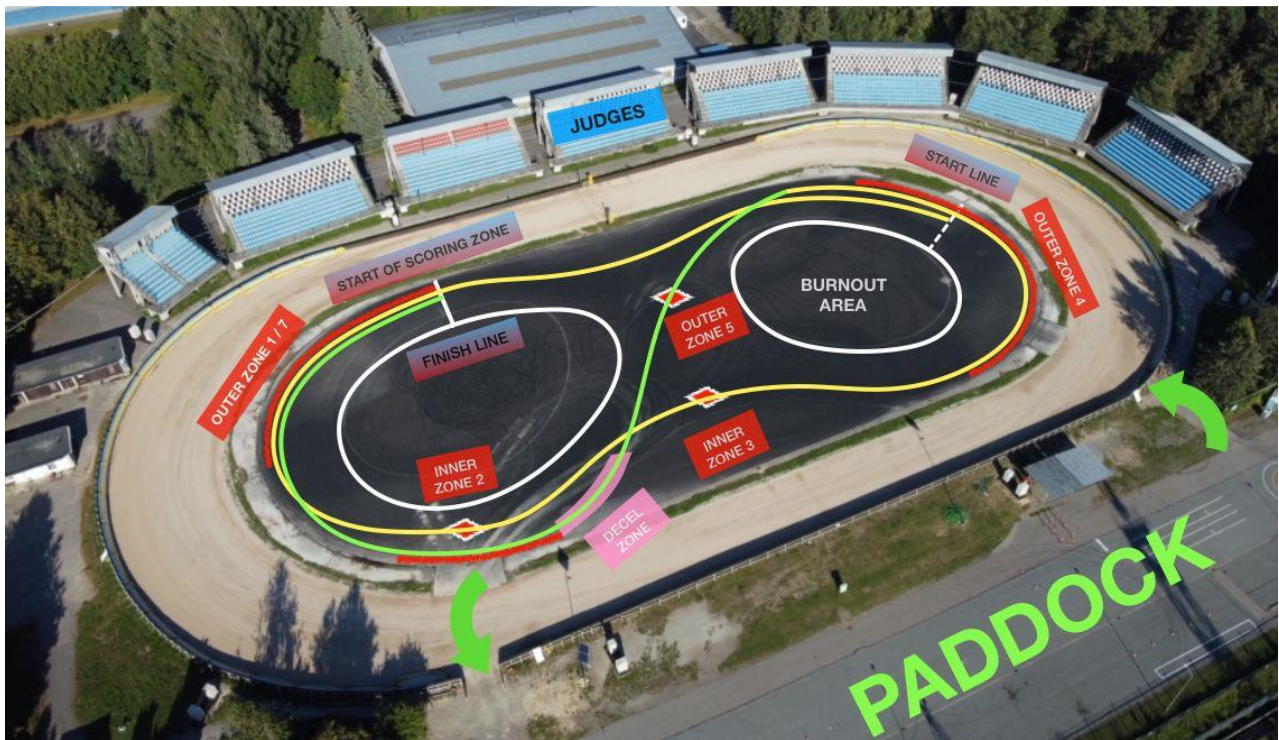
## VENUES OF THE COMPETITIONS

### STREET- SPEEDWAY STADIUM!

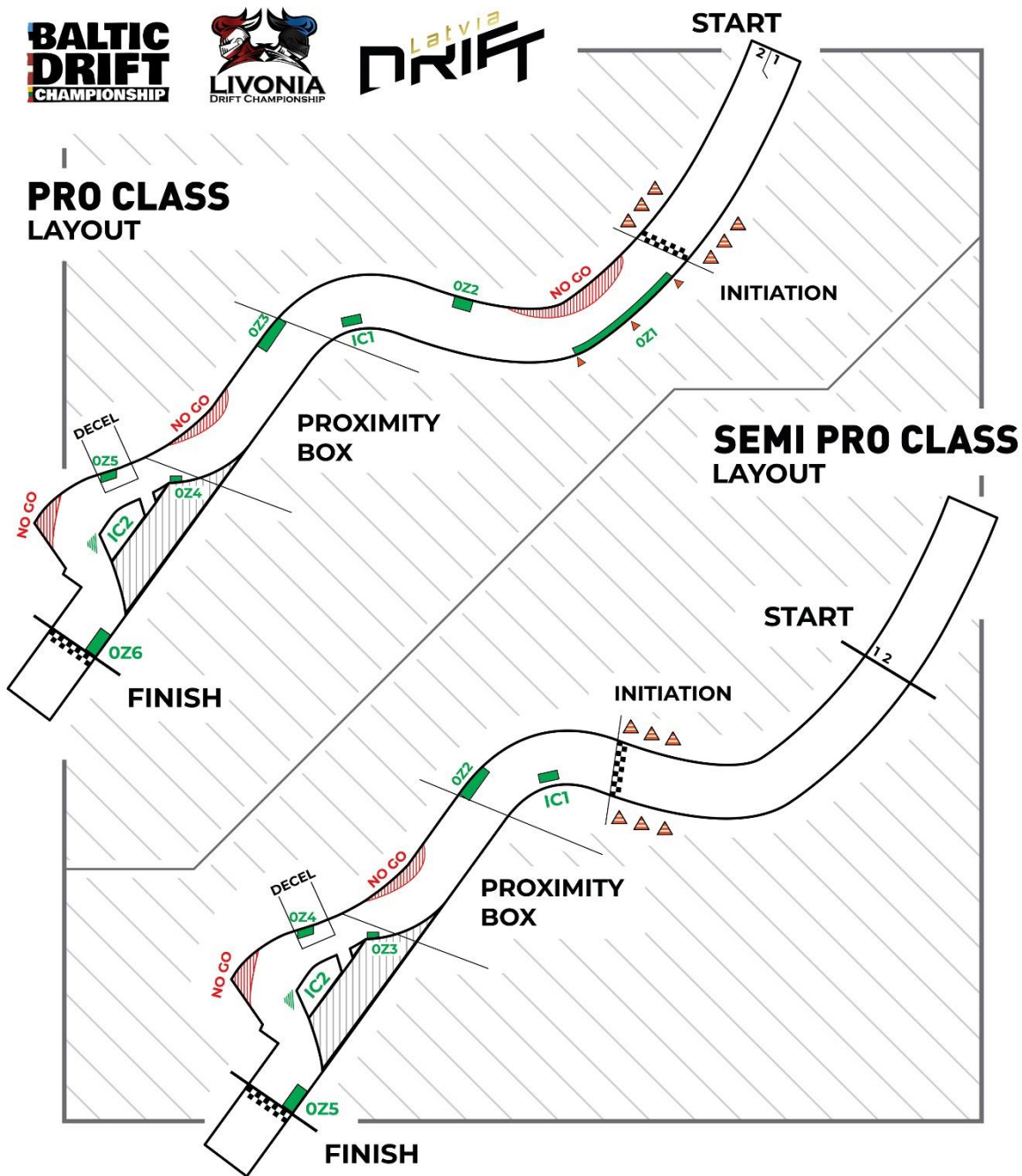


PRO AND SEMI PRO-THE COMPETITION WILL TAKE PLACE IN THE MAIN PART OF THE TRACK! CONFIGURATION NAME #NEWSTYLE!

## LAYOUT STREET



LAYOUT SEMI PRO/PRO



SEMI PRO AND PRO TRACK VIRTUAL VIDEO VERSION: <https://youtu.be/2p1gk8yKOpk?si=po8HrEYPGE99VHcq> and Small promo of the track: <https://youtu.be/VEiVCg8btmQ?si=OEMXhybNN1yeq58U>



## EVENT MAP



## OFFICIALS

- ☆ Race Director: Jānis Blušs
- ☆ Steward: Elīne Berķe Bluša
- ☆ Clerk of the course: Gunārs Ķeipāns
- ☆ Secretary of the Competition: Laila Ķeipāne
- ☆ Chief scrutineer: Dainis Akmentiņš
- ☆ Safety officer: Gatis Bajinskis
- ☆ Judges: STREET- Imants Bitmets, Elvijs Kuļijevs, Mārtiņš Vāns
- ☆ Judges: SEMI PRO/PRO- Ingus Jēkabsons(LV) , Timas Simniska (LT), Vahur Anton (EE)

**RACE INFO**

Supplementary regulations you can find in:

<http://www.driflatvia.com/dalibniekiem/dokumenti/>

**FOR MEDIA**

**REGISTRATION FOR MEDIA ARE OPEN UNTIL 30.09.2024**

<https://www.driflatvia.com/medijiem/mediaaccreditation/>

Location of Media center: BIĶERNIEKI RACETRACK- START HOUSE 2ND FLOOR

Media center opening hours: Every day from 09:00-21:00

Please read the media accreditation and safety rules: <http://www.driflatvia.com/medijiem/>

**PRACTICE GROUPS****STREET CLASS PRACTICE GROUPS**

1 GRUPA		2 GRUPA		3 GRUPA	
Anatolijs Polukejevs	LV22	Gustavs Kaktiņš	LV78	Adrians Sevcenko	LV138
Dāvis Kurmis	LV25	Gints Grenčbergs	LV28	Agnis Eglītis	LV133
Eriks Levizers	LV7	Armands Šteinbergs	LV29	Agris Lauciņš	LV102
Gust Penka	LV17	Jevgenijs Abramovs	LV30	Aivars Taube	LV140
Gustavs Koržeņevskis	LV21	Jānis Rušķis	LV31	Anatoly Mogilev	LV143
Harijs Labarēvičs	LV5	Aleksandrs Borisovs	LV32	Armands Plūme	LV145
Igors Vozņakovskis	LV4	sergejs jakovlevs	LV33	Daniels Moins	LV141
Jānis Taukulis	LV26	Markuss Muižnieks	LV35	Danils Dolganovs	LV139
Kristaps Bringa	LV8	Māris Zukulis	LV36	Davis Papavs	LV114
Leonards Muižnieks	LV2	Normunds Kampe	LV37	Edmunds Krumpāns	LV137
Martins Jānis Lapkovskis	LV19	Ernests Mozga	LV38	Jēkabs Kurmis	LV124
Matīss Lācis	LV18	Kārlis Milužs	LV40	Kristaps Grava	LV96
Mārtiņš Pats	LV12	Markuss Krieviņš	LV 41	Kristaps Pelēcis	LV142
Niklavs Averats	LV10	Gustavs Dūcis	LV44	Kristaps Rušķis	LV136
Oto Bezballis	LV03	Roberts Goldmanis	LV47	Raitis Jurčs	LV112
Roberts Lipsans	LV6	Dainis Zemnieks	LV50	Tīna Kārkliņa	LV113
Sabine Andriksone	LV24	Iskender Mursalov	EE55	Toms Felsbergs	LV97
Silvestrs Krievins	LV1	Kirils Belozerovs	LV66	Uģis Jurovs	LV84
Žanis Šteinbergs	LV11	Mārtiņš Andersons	LV69	Valdis Vilsons	LV 117
				Valters Jēkabsons	LV92



**SEMI PRO GROUPS**

1 ST GROUP		2ND GROUP	
Aivars Maciulevičius	LT120	Aleksandrs Lakutijevskis	LV25
Atvars Sars	LV9	Alvis Ledskalniņš	LV16
Dāniels Lācis	LV1	Andris Liparts	LV32
Domantas Skučas	LT55	Armands Šteinbergs	LV29
Edgars Jenčs	LV5	Arti Kannisto	EE7
Eduards Baginskis	LV11	Artur Altmets	EE60
Edvinas Balčiūnas	LT14	Artūrs Miškinis	LV24
Edvinas Savickas	LT17	Daniels Baumanis	LV27
Egidijus Didžiulis	LT22	Denis Bertrand	BE144
Emīls Tīsiņš	LV3	Emīls Segliņš	LV39
Gediminas Žigutis	LT133	Frank Passer	EE111
Gustas Valainis	LT101	Guntars Punka	LV57
Ignas Kringelis	LT20	Harlet Saar	EE58
Igor Martynov	LT20	Hendrik laur	EE21
Indre Senkute	LT 21	Henriks Dulbinskis	LV55
Jason Benet	FR44	Ingars Kristutis	LV666
Karolis Kolosovas	LT27	Jānis Kleinbergs	LV31
Kristiana Lapinskaite	LT100	Jānis Kravalis	LV28
Laimonas Laukys	LT23	Jevgenijs Abramovs	LV30
Lauri Koivunen	FI13	Jorens Klintsons	LV80
Laurynas Jurčiukonis	LT141	Kirils Malinovskis	LV14
Lukas Banevičius	LT18	Mareks Riško	LV92
Marius Kurpē	LT89	Mārtiņš Bērziņš	LV91
Māris Hartmanis	LV10	Mārtiņš Immermanis	LV48
Paulius Balzaris	LT19	Oskar Raud	EE57
Paulius Danilevičius	LT19	Pavel Gorohhovatski	EE195
Raivis Veikšāns	LV12	Randar Kajo	EE30
Rasmuntas Antanavicius	LT14	Ronalds Šaltens	LV21
Robertas Šalkauskas	LT17	Ruudi Lumiste	EE62
Rustams Džurabajevs	LV08	Timo Pino	EE25
Tomas Butavičius	LT23	Verners Martinsons	LV56
Vykintas Punys	LT45		







The division of practice groups is based on the qualification procedure. So that all drivers have roughly equivalent time from training to qualifying. In connection with the fact that LT drivers will run their tandems on Saturday evening immediately after the qualification, they will be the first on the qualification list. The rest are equivalent to their starting numbers in ascending order. As a result, 2 groups are divided for training.





PRO CLASS

The pro class does not have group divisions, all drivers will drive together at the same time.

STICKER SCHEME

**Latvia DRIFT** **UZLĪMJU SHĒMA**  
**STICKER SCHEME**  
LATVIJAS DRIFTA SEZONA 2024 / LATVIA DRIFT SEASON 2024

- 1 FRONT WINDOW STICKER
- 2 NUMBER PLATE
- 3 DRIVER NUMBER STICKERS WITH NAME SURNAME
- 4 SHELL HELIX 
- 5 DJI 
- 6 POCO 
- 7 LV BET SCORES 
- 8 CULT 
- 9 PRINT POINT 



PADDOCK

PADDOCK OPENING TIMES:

- ☆ FRIDAY 09:00-22:00
- ☆ SATURDAY 07:30-23:30
- ☆ SUNDAY 08:00-21:00



DRIFTA KOMISIJA



## ☆ Entry to race track- MAIN ENTRANCE!

### WHEN YOU ARRIVE AT THE TRACK:

- ☆ PLEASE **USE MAIN ENTRANCE GATE**
- ☆ ADMISSION TICKETS CAN ONLY BE PICKED UP BY THE DRIVER, AND WE PUT WRISTBANDS ON ARR FOR EVERY PERSON
- ☆ EACH DRIVER FROM SEMI PRO AND PRO CLASS WILL RECEIVE 4 TICKETS ( DRIVER, 2 MECHANICS, SPOTTER) AND ONE **TECHNICAL TRANSPORT** CAR PASS
- ☆ EACH DRIVER FROM STREET CLASS WILL RECEIVE 3 TICKETS ( DRIVER, 1 MECHANICS, SPOTTER) AND ONE **TECHNICAL TRANSPORT** CAR PASS
- ☆ THE DRIVER CAN PURCHASE EXTRA TICKETS IF NECESSARY, TICKET PRICE 15 EUR (MAX 3 TICKETS), IF SOMEONE HAVE BIGGER TEAM, PLEASE INFORM ABOUT THAT ORGANIZER
- ☆ TICKETS ARE NOT SPLITTED BY TRIBUNES/ PADDOCK, OR TICKETS HAVE AS PADDOCK AS TRIBUNE ACCESS
- ☆ THE DRIVER CAN LEAVE HIS CAR OVERNIGHT IN THE PARTICIPANT'S PARK! BUT PLEASE DO NOT LEAVE EXPENSIVE-IMPORTANT ITEMS IN THE PIT AREA, PUT INTO TECHNICAL CAR
- ☆ DRIVERS HAVE THE OPPORTUNITY TO STAY OVERNIGHT IN THE PADDOCK
- ☆ THE BIKERNIEKI TRACK HAS NEW RULES REGARDING THE USE OF ELECTRICITY WHICH ALSO APPLIES TO THE DRIVERS, PLEASE READ THE RACE REGLAMENT FOR THIS SECTION IF YOU NEED ELECTRICITY
  - *The organizer informs that it is categorically forbidden to light a grill, etc., in the pits or anywhere else on the track during the competition. It is allowed only after the end of the competition, observing all basic safety rules. The organizer informs that security can also stop technical cars on an optional basis to check whether alcohol is being brought into the track area.*

## TECHNICAL COMMISSION INFORMATION

There will be technical inspection at Round, so please remember to check and comply with all rules & regulations, and take care to note both- the noise regulations and the maximum tire size. Technical inspection will be available every day, in timing based on *schedule*. **The technical commission will take place in a separate area! Please plan your time for the technical commission**, without a sticker of the technical commission, the permission for training will be denied!

If you need to contact the technical commissioner during the competition, please call him: +37129560050 Dainis  
**TIRE SIZES**

- ☆ **STREET MAX 205 STREET TIRE**
- ☆ **SEMI PRO MAX 225 STREET TIRE (Latvia Semi Pro and Baltic semi pro)**
- ☆ **PRO MAX 265**
- ☆ **LT SEMI PRO DRIVER UNDER LT SEMI PRO RULES**

**SEMI PRO TIRE RULE LATVIA- BALTIC - MAX 225- STREET TIRES**



Maximum tread width of the rear tyres is 225 mm
Front tyres are free
Only the street legal rear tyres is allowed.
It is not allowed to use semi-slick and full slick tyres
Eligibility of the tyres is checked during the competition at the line-up area.
If there is any doubt about the suitability of the tire, send a clarifying question to <a href="mailto:dableds@gmail.com">dableds@gmail.com</a> Technical control can also send the competitor back from the starting line, in case the competitor makes a mistake with the tire rule.
In the season 2024 it is prohibited to use semi-slick or full slick tyres. If you have doubts about tyres you intend to use, please send the questions to <a href="mailto:dableds@gmail.com">dableds@gmail.com</a> to avoid unnecessary problems at the scrutineering. If the driver violating the tyre regulations, scrutineers can eliminate the driver even from line-up.

## NOISE

Exhaust system - exhaust system starting from the cylinder head is not regulated, as long as the 103 dB(A) at 4500 RPM noise level (+3dB(A) possible error), measured in accordance with FIA noise measurement method, is not exceeded..."

No car is permitted to be drifted between the hours of 9:00pm (21:00) to 9:00am. Please also remember that it is also forbidden to take your competition vehicle onto the open road, and take a ride without informing race organizer and official marshals into the track area.

Music on the paddock must quiet at 11:00pm (23:00).

THERE ARE QUIET HOURS FROM 23:00 PM-09:00 AM

AND PLEASE UNDERSTAND IF YOU FIX YOUR CAR IN PERIOD MENTION UP, ITS PROHIBITED TO TEST IT, MAKE TESTS, MAKE SOUND, PENALTY 500 EUR, all around track are cameras, so please don't do anything without permission!

## TIRE CHANGING

There will be tire-changing crew, which will work at the place. Tire fitting is included in the entry fee! The tire assembly will be located in the Semi Pro and Pro paddock.

Tire changing will work as Friday, Saturday as in Sunday!

Please do not leave your tires at the tire fitting, hoping that the fitters will do the feeding and inspection of the tires for you! if there is no person with the tires, but someone gives the tires, of course they will take what they give! People who do their job cannot control your tires, etc. at the same time. If you leave the tires at the assembly, your person must be there; otherwise, the tire assembly people will ignore the tires.

## TRAILER PARKING

Trailer parking **for Semi Pro and pro- RALLYCROSS TRACK GRAVEL PART!** It is strictly forbidden to park trailers in any other place! We respect each other!





FOR STREET- under the speedway stadium tribunes!

## ELECTRICITY

Drivers, who need an electricity connection, must inform the organizer and pay extra for that. In the Bikernieki track has a fixed payment for electricity connections, which also applies to the drivers. It is categorically forbidden to connect without permission to any electricity around the track, the Bikernieki personal is checking connections all the time and seeing in computer used connections. Penalty for connecting without permission 100 EUR for every case.

The rates indicated below are set for 1 connection for 1 day, in connection with the BKSB official price sheet, which is also available on the website [www.bksb.lv](http://www.bksb.lv). Drivers can make the payment to the secretary of the competition, indicating the location of the boxing place, the drivers starting number and type of electrical connection.

- Electricity connection (power of connected electrical appliances up to 3kW) – 18,50 EUR (Incl. VAT 21%)
- Electricity connection (power of connected electrical appliances from 3 to 12 kW) – 35,50 EUR (Incl. VAT 21%)
- Electricity connection (power of connected electrical appliances from 12kW) - 71 EUR (Incl. VAT 21%)

## DRIVER BRIEFING AREA

Drivers 'meetings will take place in a separate room - the drivers' meeting room-area.  
Spotters' areas will be confirmed for you during the first briefing.

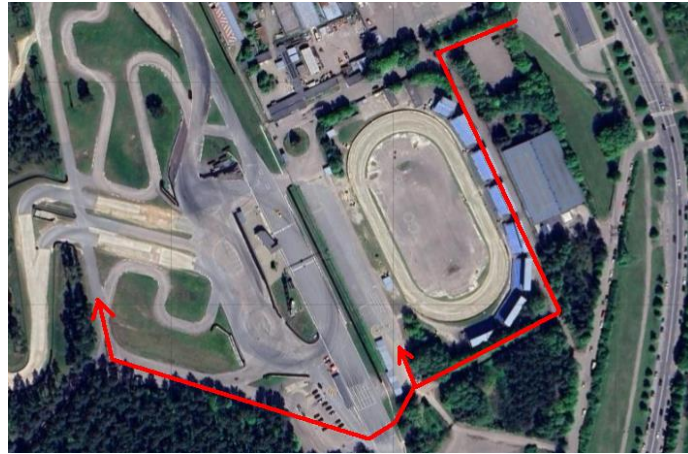
## SOME SPECIFIC MAPS TO UNDERSTAND MOVEMENT AND THINGS

ARRIVAL TO THE TRACK AND MOVEMENT AS TO STREET, AS TO SEMI PRO/PRO PADDOCK

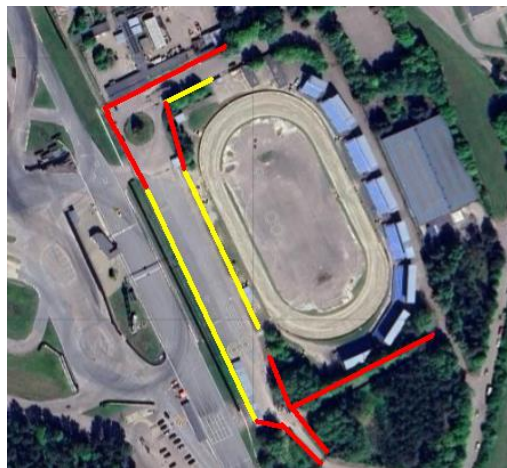


DRIFTA  
KOMISIJA





STREET CLASS PADDOCK PLACES- WITH YELLOW ALLOW TO PARK, WITH RED TOTALLY PROHIBITED TO PARK!!!



OPTIONS TO PARK IF YOU ARRIVE ALREADY THURSDAY!! FIRST- NO POSSIBILITY TO GO INSIDE THE PADDOCK! Paddock will be open just from Friday. But there is options what use always all drivers who arrive faster- 2 big parking areas near the main entrance- green lines, you just need to pay 3,50 per 24hours! One more option is, if we will be in track, when you arrive, we can let you park inside the track- blue lines, it's also direct where is main entrance!



STREET- THIS IS THE TIME, WHEN YOU WILL SHOW HOW YOUR TECHNICAL VAN WORK- PLEASE REMEMBER, THAT TIRE CHANGING WILL BE IN THE MAIN PADDOCK, SO YOU WILL NEED TO GO THERE, AND USE YOUR PADDOCK STICKER!



## IMPORTANT INFORMATION THAT CAN HELP YOU

### CLOSEST CAR PART SHOPS:

- ☆ Adress: Dzelzavas iela 120 J, Rīga (1KM) [www.apemotors.lv](http://www.apemotors.lv) +37167387878
- ☆ Our use Intercars web page

### GASOLINE:

- ☆ E85 you can get VIADA, Gunāra Astras street 4,2KM
- ☆ CIRCLE K 1,5km
- ☆ NESTE 1,5km

### CAR WASH

- ☆ FORAUTO- Biķernieku iela 118, 2km
- ☆ Carwash service 1km



DRIFTA KOMISIJA



### CLOSEST SHOPS:

- ☆ Food- RIMI, 280m from track
- ☆ Food and medicine- SKY- 1,7km from track
- ☆ Lidl 300m from track
- ☆ Shopping mall Alfa Park- Brīvības gatve 372, 2,8km

***It is strictly forbidden to bring glass bottles and heavy alcohol into the paddock and race area, also forbidden to drink heavy alcohol in race time in you paddock area!***

### CLOSEST HOSPITAL:

- ☆ Rīgas Austrumu klīniskā universitātes slimnīca, Hipokrāta iela 2, Vidzemes priekšpilsēta, Rīga, LV-1038

## RULES OF THE ROAD

- ☆ Maximum permitted speed: 50 km / h in cities, 90 km / h outside cities;
- ☆ In road traffic, photo radars are used to control speed;
- ☆ Safety belts must be worn by the driver and passengers at all times;
- ☆ While driving, it is forbidden for the driver to use the cell phone while driving;
- ☆ The traffic police may require drivers to undergo an alcohol test;
- ☆ The maximum level of alcohol in the blood is 0.05%, for drivers with less than two years of experience 0.02%.

Please also remember that there trucks who have bigger weight than 3000kg or the composition is bigger weight than 3500 kg need to buy „Vinjete”, you can buy separate it for 1 day, 1 month our 1 year!

There are different ways how you can buy „Vinjete” also by SMS:

<https://www.lv vignette.eu/>

[https://smsvinjetes.lv/?gclid=EAIaIqobChMIjluRzLOC4wIVwpQYCh2SAw90EAAYASAAEgIN3PD\\_BwE](https://smsvinjetes.lv/?gclid=EAIaIqobChMIjluRzLOC4wIVwpQYCh2SAw90EAAYASAAEgIN3PD_BwE)

<http://www.viglat.lv/en>

## HOTELS INFORMATION

**RIJA VEF HOTEL SECOND CLOSEST HOTEL TO TRACK- THERE WE HAVE DISCOUNT WITH CODE- DRIFT2024**, you can use in any of those hotels: rijahotels.com, wellton.com, rixwell.com.

Use promo code in system or message them with mntion the code: [reservations@mogotel.com](mailto:reservations@mogotel.com)

### AND ON MORE HOTEL WITH 35% DISCOUNT JUST FOR DRIFTERS

#### Aparthotel Amella (ENG)

A new 4\* superior apartment hotel in Riga, Aparthotel Amella, is located at Emīlijas Benjamiņa Street 8. The hotel's location is convenient, quiet and within easy reach. Guests staying at the Amella appreciate its convenient range of services, which include overnight accommodation, **parking in a private courtyard** and the opportunity to feel like at home. **Aparthotel Amella offers accommodation in apartments, different from standard hotels. This means that**



DRIFTA  
KOMISIJA



Shell  
HELIX





**guests can stay in the hotel's rooms, which are equipped with kitchenettes and guests can prepare their own breakfast.** The hotel's apartments have full kitchen facilities and a washing machine is provided for guests' convenience.

The hotel is family-friendly and pet-friendly.

The hotel has 85 apartments offered in 5 different categories - Classic, Standard, Superior, Executive, Deluxe. Some of the apartments are also inter-connecting, **allowing up to 8 people to stay in one apartment.**

**Aparthotel Amella is offering a special 35% discount on accommodation in the hotel suites for participants of the Drift 2024 season events. The offer includes free Wi-Fi, Tea and Coffee Starter Kit, kitchen equipment, laundry capsules, cleaning once per week and 12% VAT.**

Please note that the offer does not include a City Tax of 1 EUR/per person/per night, which must be paid at the guest reception on the day of arrival. The payment of the tax is maximum EUR 10 per stay and is not required if the guest is travelling for work purposes.

**To make a reservation, please send an email to [info@hotelamella.lv](mailto:info@hotelamella.lv), or call +371 29530895 mentioning the discount code DRIFT2024.**

**You can also book by visiting the hotel website <http://www.hotelamella.lv> and using the discount code DRIFT2024 during the booking process**

**SOME PICTURES:** <https://failiem.lv/u/hm248jtubz>

#### **DRIVERS ALSO HAVE THE OPPORTUNITY TO STAY OVERNIGHT AT THE TRACK**

**If drivers stay overnight on the track, certain rules must be followed:**

1. if the driver stays in the trailer, the trailer must be "tucked in" in the participant's parking area, so that he is not visually visible much and that there is no mess around during the competition time, so if you plan to stay in paddock we ask you to put your paddock in track widest place so campers are behind your paddock place.
2. if the teams spend the night in tents, then the tents must also be visually "hidden" in the participant's paddock area, so as not to create an unsportsmanlike view of the drivers boxes and the park as a whole.

The organizer has every right to ask you to drive the trailer or remove the tents at any time.

### **ADDITIONAL REGULATION**

1. During the event, it is not allowed for drivers to drift outside the track on the track territory, any time! In the regulations this point is added and have even the possibility of being disqualified.
2. During the event, it is **strictly forbidden** to drift on the way to the starting zone or after the finish. The first offense will be fined with up to 100 EUR.
3. **Doing a standing burnout is strictly forbidden.**
4. Drivers are not allowed to drift outside their runs.



5. During the event, each driver is fully responsible for their actions on the track and for the safety of themselves and others.
6. During the event, on the track territory leading from the service park to the start zone, a driver takes full responsibility of any accidents with people, who might be on the track. It is suggested to drive no faster than 10 km/h from the service park to the start zone. If driver is caught with faster speed or drifting from the service park to the start zone, drift organizer can put penalty - 100 eur
7. The service park will be located in the track territory, where only the race car and service car are allowed to enter.
8. The maximum allowed speed in the service park is 10 km/h. For the first time, speeding can be punished with a warning or a fine, but if any driver or drivers representative violates this rule with the race and/or service car repeatedly, they will not be allowed to enter the service park anymore.
9. **PRO CLASS AND SEMI PRO, FROM TOP8 DRIVERS WILL HAVE HOT PIT IN THE START LINE, SO PLEASE PREPEARE YOUR TECHNICAL CAR FOR THAT, IF RACE DIRECTOR DON'T INFORM DIFFERENT IN RACE DAY!!**

PLEASE JOIN THE SPORTITY APP



DRIFTA  
KOMISIJA



Shell  
HELIX





# Sportity

For direct event information please download the Sportity app and insert this password:

# rigababy

Sportity app is available in



[www.sportity.com](http://www.sportity.com)



DRIFTA KOMISIJA



Shell HELIX

